



GERMAN ENGINEERED  
TO SET YOUR  
HOME APART

Specialist Window & Door Systems

# Exceptional Performance & Style.

Innovation in design giving comfort and security in your home.

Choosing new windows and doors is a very personal matter. It's the moment you can really decide to set your home apart.

Whether you want double or triple glazing, classic or ultra-modern styles, the aluplast range makes your choices elegant, simple and clear.

aluplast combine environmental responsible state of the art manufacturing without any compromise on the quality of your windows.

- Casement windows
- Flush sash windows
- French doors
- Sliding patio doors
- Sun rooms and Conservatories



*“ Combining award winning design and aesthetics with precision German engineering ”*

## aluplast

Leading PVC-U technology for more than 30 years.

Established in 1982 in Karlsruhe Germany aluplast today is one of the world's largest extruders of premium quality Pvcu window and door products. With 28 production facilities and sales offices across the world producing close to ten million windows and doors a year.

Extensive configurations and finishes, high security, superb energy efficiency and sound insulation, low maintenance and impressive whole-of-life eco-credentials – these are just some of the reasons discerning consumers, architects and developers choose aluplast to achieve the designer difference.



# aluplast Windows and Doors.

Better performance  
through inherent better  
technology and design.

## Excellent heat insulation and energy efficiency

- Five chambers at the core of the design and two chambers either side of the reinforcement chamber, provide a superb thermal insulation performance.
- Energy-efficient glass.

## Wide style and choice

- Fully sculptured elegant profiles enable windows to be created to suit any property.
- Wide range of standard, foil and special foil finishes.

## High security for peace-of-mind

- Single leg glazing bead design offers stability and high security.
- Steel reinforcement, where necessary, providing additional structural strength.

## Superior sound insulation

- aluplast windows and doors, fitted with modern glazing units, provide excellent sound insulation through a wide range of frequencies.
- Specialised glazing units can enhance sound insulation even further.

## Better for you and the environment

- The dangers of lead have been well known for many years. That's why all windows and doors manufactured from aluplast PVC-U systems are lead-free. aluplast is among the forerunners offering a calcium organic lead-free range of products.



Windows and doors  
designed to complement  
**your house and your style.**

**Above top:** Golden Oak casement windows.

**Above middle:** Modern installation incorporating sliding patio doors.

**Above bottom:** Top hung casement windows with the Horn Sash design feature.

We can make windows for any type of property, modern or traditional.



# Sustainability and the environment.

Because being greener means everyone lives better.

## Sustainable, eco-managed production

An ecologically sound production process coupled with a sustainably designed workplace, form a crucial part of aluplast eco guidelines. The result is environment-friendly products: efficient design, production and manufacture and a minimum carbon footprint.



## Recycle, recycle, recycle

aluplast offers window systems that can be fabricated and recycled in an ecologically sound way.

The raw materials used for window profiles are based on a calcium-organic chemical compound that is entirely lead-free. aluplast also supports VinylPlus, the European PVC industry's sustainable development programme to promote the use of recycled materials in PVC-U window and door profiles.

## Long service lifetime with PVC-U products

aluplast PVC-U systems achieve typical service lifetimes of 30 years. Once manufactured and installed they require minimal maintenance. There's no need for (or environmental impact from) the periodic chemical treatments, stains or paints needed to maintain the finish and protect wood from decay.



# Sustainability

Economic. Social. Environmental

## Protecting the environment actively with PVC-U windows

aluplast PVC-U window systems live up to what they promise: An outstanding product quality and a long service life contribute actively to the conservation of the natural environment.



## Responsibility towards people and the environment

aluplast assumes responsibility for people and the environment and, together with customers and partners, contributes actively to the protection of our natural environment!



- **ecotech70®** extrusion technology, unique in the UK, limits this recaptured material to specific parts of our system, ensuring we meet our obligations to reduce waste and carbon emissions to preserve our future.
- All profiles designed to be visible, or even touched following installation, are 100% prime quality Calcium Organic stabilised PVC-U – totally free of lead, giving complete peace of mind to the home owner.
- In its Green Guide, The Building Research Establishment (BRE) regards PVC-U as one of the most fit-for-purpose materials available, in terms of environmental impact.
- It achieves one of the highest scores for the manufacture of doors and windows, for any material known to mankind, on a 'cost to performance' basis. It's significantly better than aluminium, steel or softwood due to great service life. This also allows the recovery of both pre and post-consumer waste, for re-engineering into 1st grade PVC-U profile many times over.



## Windows

Style and elegance to bring light and life into your home.

- Complete range of sizes, shapes, styles and glass designs
- Casement windows – top or side hung outward opening, tilt and turn windows inward opening, French windows, bay windows and shaped windows
- Comprehensive choice of colours
- Five chamber profile design enhances energy efficiency
- Fully sculptured elegant profiles enable windows to be designed for any style of property
- Single leg internal glazing bead enhances security and high-security multi-locking systems available
- Triple glazing available for ultimate energy and acoustic performance
- Low maintenance - just wipe with a damp cloth to retain pristine appearance
- All windows bespoke manufactured for your home



Your windows, **your style.**

To find out more about the **design options** for **your windows** get in touch today!



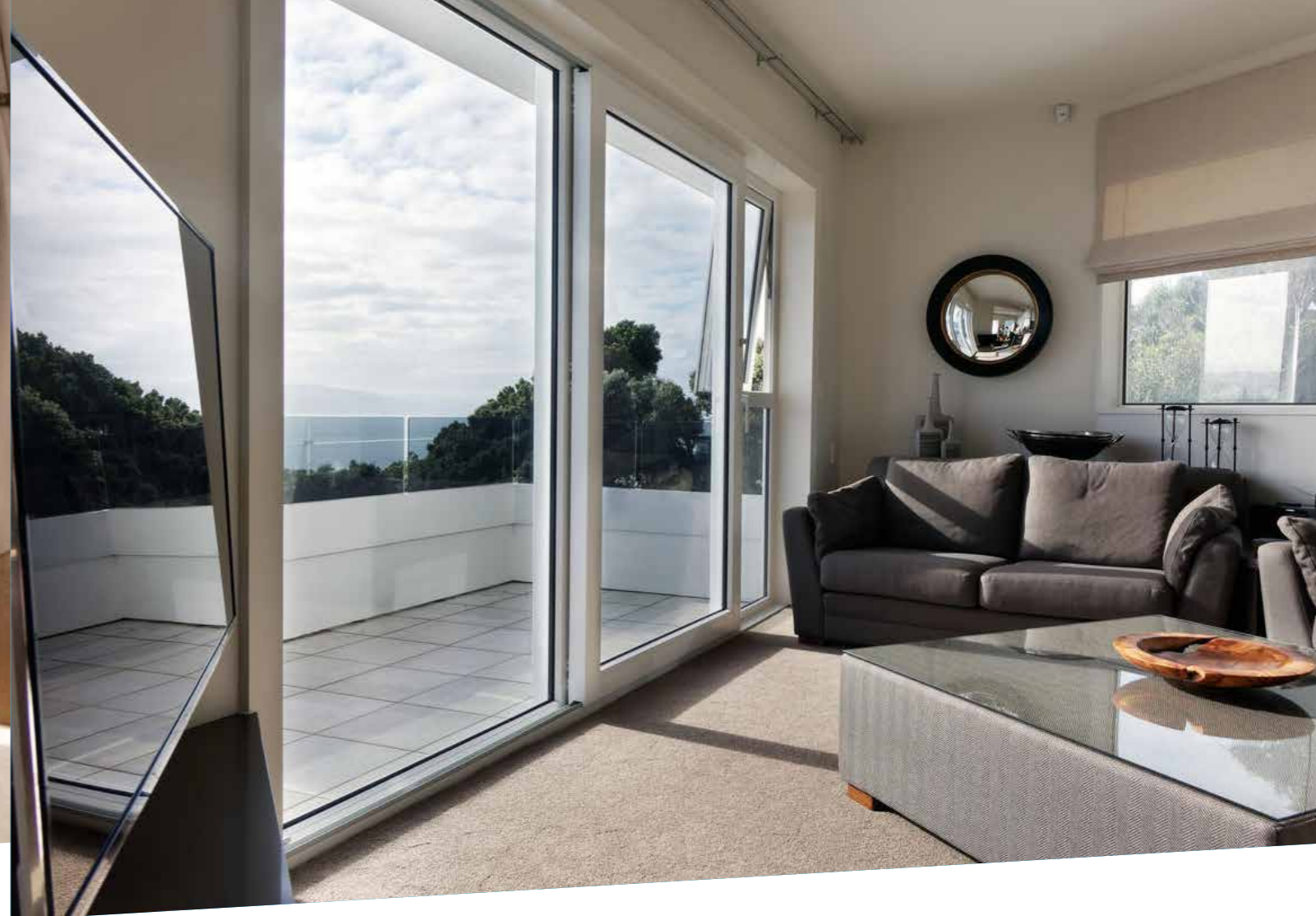
## Entrance Doors

Create the perfect first impression your home deserves.

- Choose from a vast range of glazed, panelled or composite doors
- Inward or outward opening
- Comprehensive choice of colours
- Low maintenance – just wipe with a damp cloth to retain pristine appearance
- High-security multi-locking systems available
- Matching side panels available with patterned glass options
- All doors bespoke manufactured for your home
- Low threshold option available

Your entrance door, **your style, your security.**

To find out more about the available **design options** for **Entrance Doors** get in touch today!



## French Doors

Classically detailed traditional designs.

- Choose beautiful French doors to open up your home to your garden
- Comprehensive choice of colours
- Low maintenance – just wipe with a damp cloth to retain pristine appearance
- Side panel choices with patterned glass options
- Inward or outward opening
- High-security multi-locking systems available
- Traditional elegance with a continental touch
- All French doors bespoke manufactured for your home
- You have a choice of pvcu standard or low aluminium thresholds for easy access



## Sliding Patio Doors

Seamless transition from your home to garden.

- Let the garden in to your home with an aluplast sliding patio door
- Available as a two panel patio up to 4.5 metres wide
- Comprehensive choice of colours
- Low maintenance – just wipe with a damp cloth to retain pristine appearance
- High-security multi-locking systems available
- More light, more comfort
- All sliding patio doors bespoke manufactured for your home

Your French doors, **your elegant link to the garden**

To find out more about the **design options** for **French doors** get in touch today!

Your sliding patio doors, **your versatile link to the garden.**

To find out more about the available **design options** for **Sliding Patio Doors** get in touch today!



## Bi-folding Doors

The ultimate way to harmonise your home and garden.

- Remove the divide between your home and garden with aluplast bi-folding doors
- Choose from a range of configurations
- Comprehensive choice of colours
- More living space with a completely unrestricted view
- Low maintenance – just wipe with a damp cloth to retain pristine appearance
- High-security multi-locking systems available
- More light, more comfort
- All bi-folding doors bespoke manufactured for your home



## Sun Rooms & Conservatories

More family space to enjoy all year round.

- Add a new lifestyle dimension to your home with an aluplast conservatory or sun lounge
- Create beautiful extra living space for year round enjoyment
- If you plan to refurbish an old conservatory to create a new sun lounge, or start from fresh, be sure to install aluplast thermally efficient window frames
- Comprehensive choice of colours
- Low maintenance – just wipe with a damp cloth to retain pristine appearance
- High-security multi-locking systems available
- More light, more comfort
- All aluplast conservatories and sun lounges are bespoke, and manufactured to your own specific design choices

Your bi-fold doors, **your freedom to merge home with garden.**  
To find out more about the available **design options** for **Bi-fold Doors** get in touch today!

Your conservatory, **your space to enjoy.**  
To find out more about the available **design options** for **Conservatories** get in touch today!



## Horn Sash Casement Windows

Capture traditional detailing in a modern window.

- The new CNC-machined sash horn detail emulates a traditional sash horn in a casement window, providing a cost-effective alternative to a traditional box sash window
- Sash horn details on casements aren't new, but our new sash horn represents a complete re-design, with a new end cap, delivering a fully integrated flush finish, which emulates that 'hard-to-capture' traditional detailing
- The new sash horn run-through detail is available across aluplast's range of standard foiled colours, including Golden Oak, Palisander, Cream, Rosewood and Anthracite Grey



## Tilt and Turn Windows

Adding a modern, contemporary look to your home.

- Aluplast Tilt and Turn windows with a concealed hinge, are available in a varied range of styles and colours
- The Slimmer frame is optional with the aluplast Tilt and Turn window
- Recommended for upper escape and access for cleaning window

The ultimate in traditional design

To find out more about the design options for Horn Sash Casement Windows get in touch today!

Ideal for use where access is an issue

To find out more about the available design options for Tilt and Turn Windows get in touch today!





## Flush Sash Casement Windows

The traditional yet now contemporary option when choosing windows for your home

- A timber looking window yet with all the thermal, low maintenance and weather performance benefits of PVCu
- Triple seals for a truly weather tight and draft free window the Flush sash has an BFRC A performance rating
- You have the choice of over 30 traditional and smooth contemporary foil colours for a beautiful flush exterior appearance.
- The comfort of a night vent position without compromise on optimum security.



Complement your **window designs**

To find out more about the **design options** for **Flush Sash Windows** get in touch today!



## Bay Window

Enjoy panoramic views and fill your home with natural light.

- There are several options available to you when selecting aluplast bay window arrangements
- From our 90° square bay to both 135° and 151° options for either a three or five facet bay window
- The variable angle bay post allows a degree of customisation when required
- If your bay window is load bearing we recommend our engineered load bearing structural and adjustable bay pole (size and load dependant)
- All our bay windows are designed so as not to compromise the aesthetic of your home

Adding the illusion of **extra space to your home**

To find out more about the available **design options** for **Bay Windows** get in touch today!

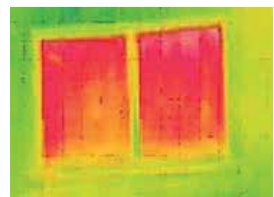
# Save energy. Sleep safely, too.

Heat loss matters. Thermal efficiency, U values and energy ratings.

Even though windows comprise only 8% of the external surface area of a home, they account for almost 40% of the heat lost. Advanced aluplast engineering lets you dramatically reduce heat transfer through glazing and frames.

The U value of a window indicates how well the glazing and frame provides thermal insulation. The lower the U value, the better the insulation qualities of the window. By reducing the heating needed within your home, fuel savings can run in to hundreds of pounds every year. aluplast can manufacture window specifications capable of U values under 1.00.

Featuring five chambers, the latest aluplast Ideal 70 system comfortably achieves an 'A' standard Window Energy Rating (WER) with a double glazed unit. With a 40mm triple glazed unit instead, the system delivers a WER of 'A Plus'.



Heat energy is transferred from homes by conduction through the walls, floor, roof and windows. Heat loss through windows can be reduced using thermally efficient window frames and double or triple glazing. Heat loss through conduction is then reduced significantly. Further improvement in reducing heat loss can be achieved by introducing alternative more efficient spacer bars and gas filled glazed units.



## Security first. Protection against break-ins.

According to the police, most burglars force open doors and windows by lifting, hammering or drilling. aluplast PVC windows are designed to protect your family and your home from intruders. Window and door resistance to various levels of attack can be compared thanks to new European standard, DIN EN 1627.

All aluplast window and door profiles, glazing and hardware resist the most demanding assaults – the use of power tools for instance – for a minimum of 15 minutes or longer.

Stringent testing has gained the aluplast Ideal 70 system PAS24-2012 and BS 7950 from the British Standards Institute.



# Express yourself.

A wide range of coloured foil finishes.

All aluplast coloured foil finishes feature innovative technology which improves performance characteristics providing a much longer life cycle of the surface finish. Our lamination foils utilise special patent-protected pigments which considerably reduce the surface temperature of coloured foil finished profiles.

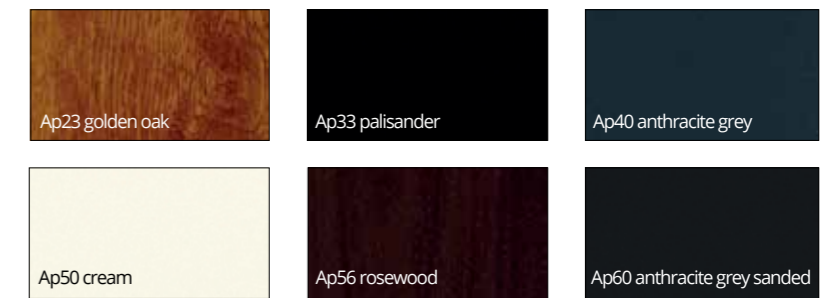
The IDEAL systems are available in a beautiful white lustre finish (RAL 9016) and also in the following elegant coloured foiled finishes as a standard stock offer:



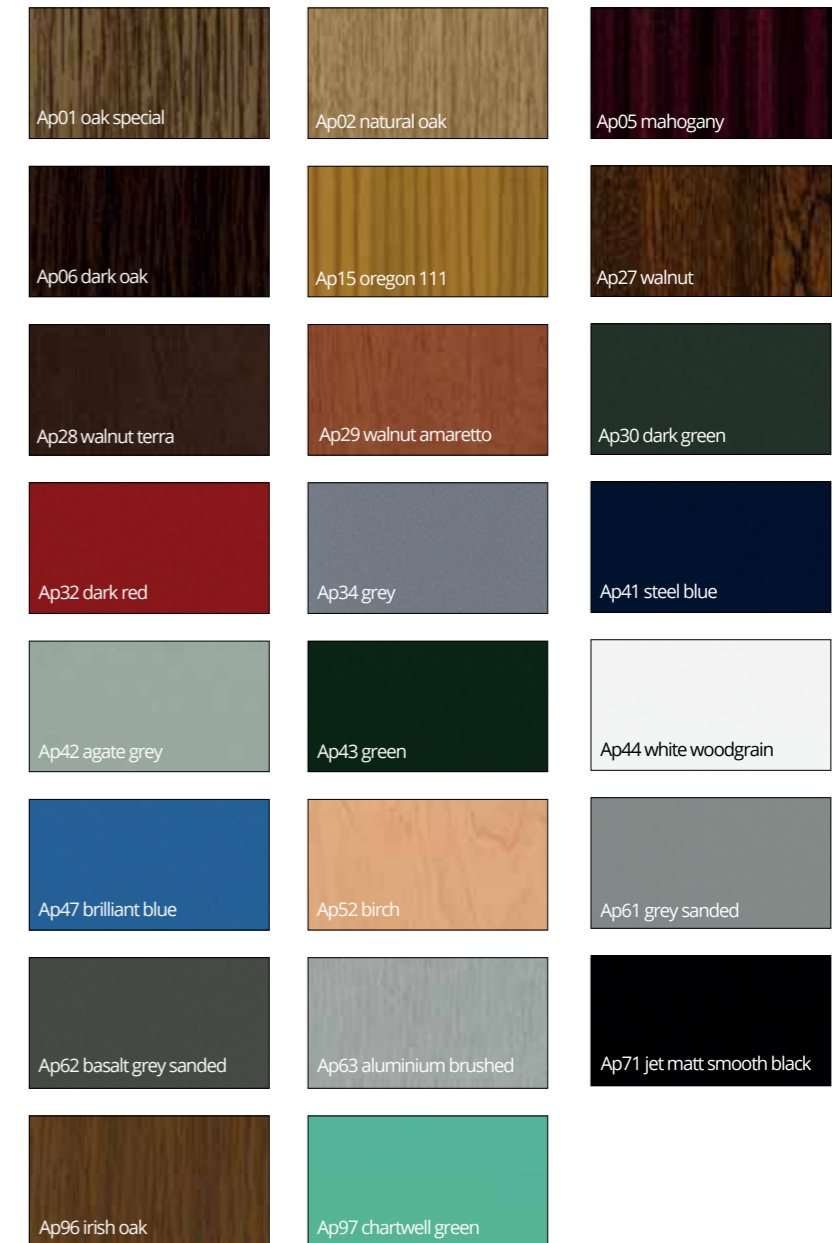
In the recent years, the way of thinking about architecture has changed significantly. This change is expressed primarily in the search, in both the design of the building and in the products used in it, for solutions allowing to give these projects a unique and individual style. The preferences regarding colors have also changed significantly, where currently among most predominant colors are anthracite, basalt and various shades of gray.

Now all grey and black foils are available to order on a Dark Grey PVCu substrate.

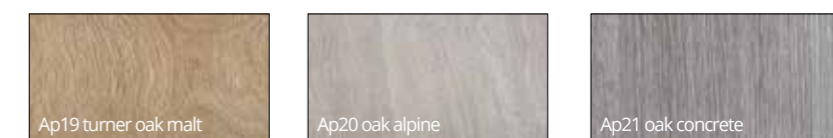
### Standard foil colours



### Custom foil colours



### Woodec foil colours



NOTE: The colour representation given here may vary from the actual foil colours used in the product due to the limitations of print technology.

For more details visit [www.aluplast.co.uk](http://www.aluplast.co.uk)



**aluplast UK** Unit 1, Green Lane, Tewkesbury, GL20 8HD

Tel: **01684 273401** Email: **info@aluplast.co.uk** Visit: **www.aluplast.co.uk**

aluplast has tried to ensure that all information provided in this brochure was correct at the time of going to print but cannot guarantee the accuracy of such information. All images, swatches and illustrations are just representations and the final product may not exactly match what is seen in this brochure. aluplast is not liable for any action you may take as a result of relying on such information or advice or for any loss or damage suffered by you as a result of you taking this action.