



TITAN
ALUMINIUM



TITAN 'EDGE' Flatroof Products



Titan 'EDGE'

With unrivalled, intelligent styling, thermal efficiency, security and simple installation, the Titan 'EDGE' flat rooflight ticks every box.

Design

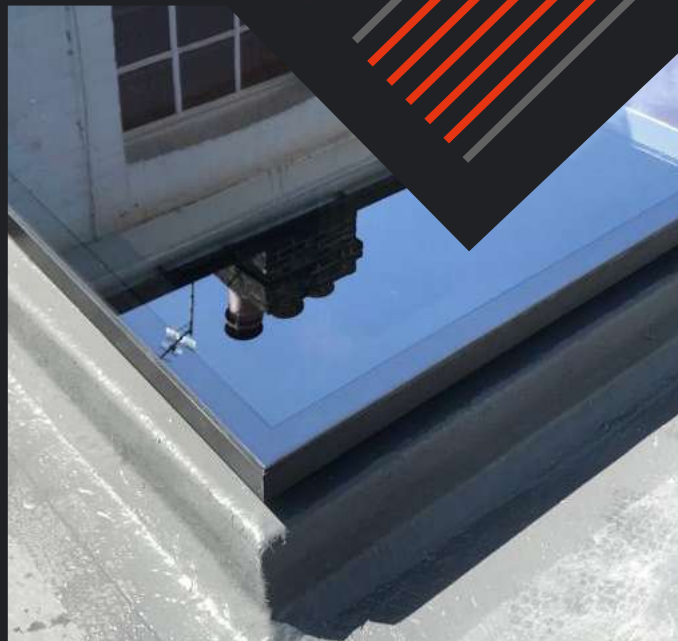
With a unique and polished edge-to-edge glass exterior, it's not only a stunning evolution of its rivals, but brings many practical benefits. Its clever design allows water to simply glide off its surface and not be hindered by perimeter sealants or protruding frames. The Titan 'EDGE' flat rooflight stands only 63mm above the roof upstand and blends seamlessly into any property.

Thermally Efficient

Whilst allowing maximum light to flood in, the Titan 'EDGE' effortlessly keeps the unwanted heat out and the ambient room temperature constant giving you the benefit on year-round comfort and performance.

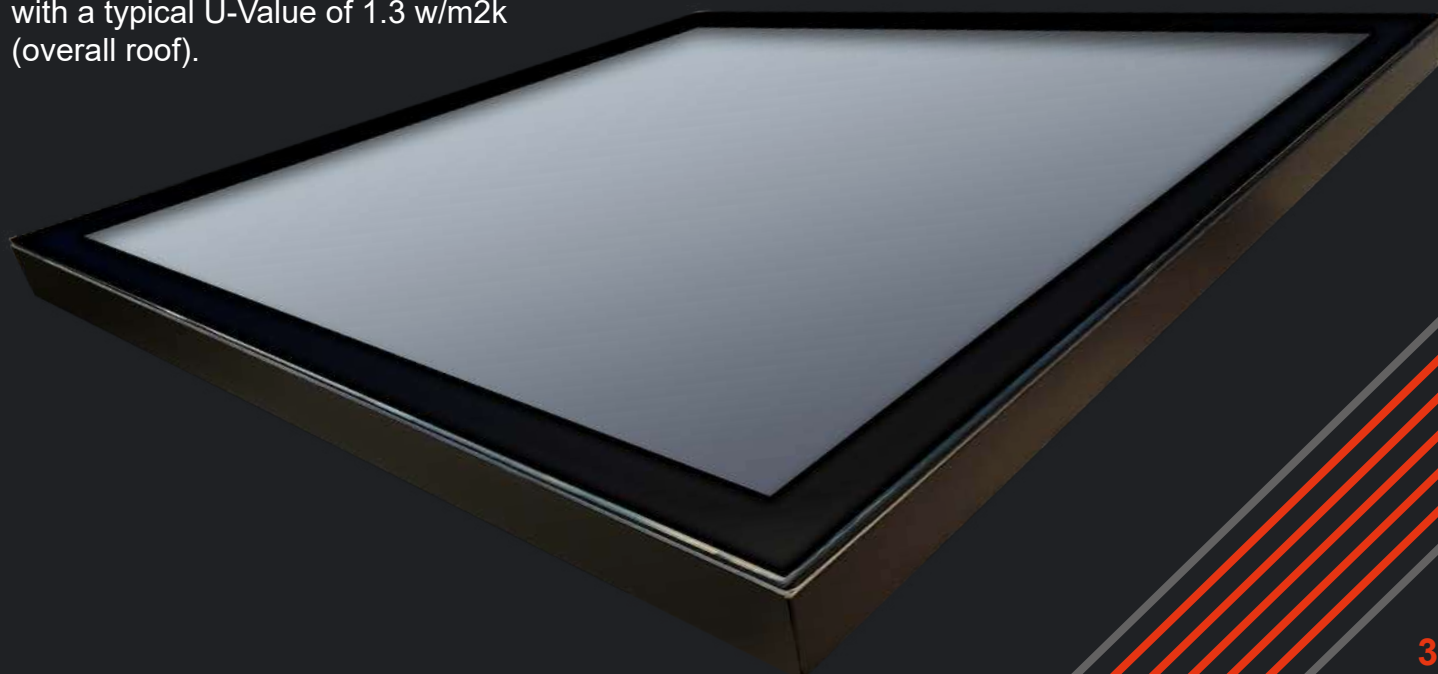
The Titan 'EDGE' has a very careful selection of high-performance glazing components. It benefits from both low maintenance solar reflective glass outside and low emission laminated glass inside, structurally bonded into the unique super-slim edge thermally broken aluminium frame providing all-year-round comfort with a typical U-Value of 1.3 w/m²k (overall roof).

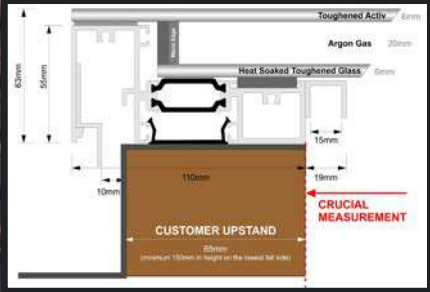
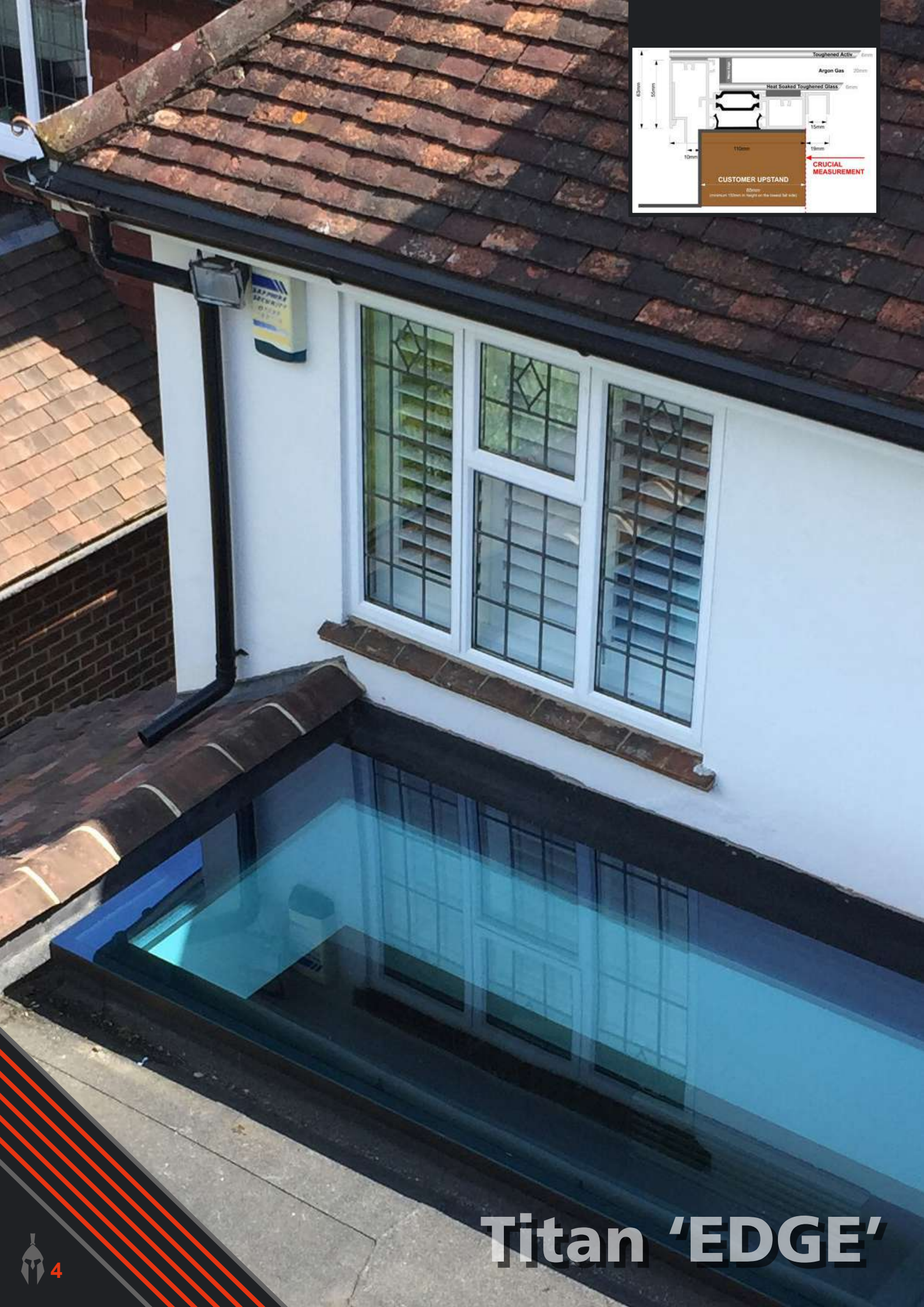
Bespoke Range



Security

A very welcomed standard feature of the Titan 'EDGE' is laminated security glass to the inner panel. The shatterproof laminated glass is included as standard and provides homeowners with safety, security, noise reduction, and 98% reduction in UV rays which prevents sun bleaching. This addition gives you peace of mind as it's very difficult to penetrate from the outside and also as the inner panel is shatterproof laminated glass that provides optimum safety.





Titan 'EDGE'



Titan 'EDGE'

Available for next day collection and delivery within 7 to 10 working days. Bespoke sizes available on a 2-3 week lead time.



Available in:

- Grey (RAL 7016M)
- Black (RAL 9005M)
- Dual colour (white inside) at no extra cost

Stock Flat Rooflight Size Range

1000 X 1000

700 X 1500

1000 X 1500

1000 X 2000

1000 X 2500

1500 X 2000

1000 X 3000

Stock Range

1.3 w/m²k U-Value
(overall roof)

**Shatterproof heat soaked
toughened glass as standard !**

UK mainland delivery

**To help you finish the job, our
stock roofs are always ready to go !**



Titan 'EDGE' AIR

The 'EDGE' Air flat rooflight comes with the same superior specification as the Titan 'EDGE' with the added benefit of a manual or electric opening. Intelligent styling, thermal efficiency, security, with fully assembled mechanicals and simple installation, the Titan 'EDGE' AIR has it all.



Thermally Efficient

Whilst allowing maximum light to flood in, the 'EDGE' Air effortlessly keeps unwanted heat out and the ambient room temperature constant giving you the benefit of year-round comfort and performance. The 'EDGE' Air has a very careful selection of high performance glazing components, benefitting from low maintenance solar reflective glass outside and low emission laminated glass inside, structurally bonded into the unique super-slim edge thermally broken aluminium frame providing all-year-round comfort with a typical U-Value of 1.3 w/m²k (overall roof).



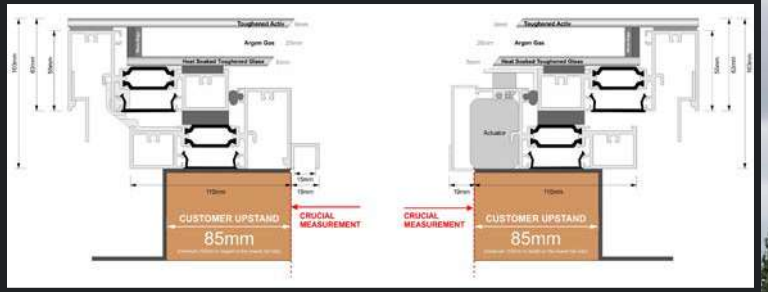
Design

With a unique and polished edge-to-edge glass exterior, it's not only a stunning evolution of its rivals, but brings many practical benefits. Its clever design allows water to simply glide off its surface and not be hindered by perimeter sealants or protruding frames. The intelligently concealed actuator is almost silent with its 'soft start' and 'soft close' operation. The 'EDGE' Air rooflight will open to a maximum of 300mm, and can either be operated by a wall mounted switch or a remote control. Additional options include rain sensor and thermostatic controls to automatically close when rain is detected. Also available with manual winder and pole.

With its ultra low-profile design, the 'EDGE' Air stands only 103mm high. It's only 40mm higher than its sister product the Titan 'EDGE' allowing you to install them side by side with very little height difference.

Security

The 'EDGE' Air is fixed internally by way of pre-fitted strap fixings. A very welcome standard feature of the 'EDGE' Air is heat soaked toughened safety glass and provides home owners with safety, optimal safety and peace of mind.



Titan 'EDGE' AIR





Titan **'EDGE'** Multipane

Using our stunning 'EDGE' rooflight range, the multipane reduces the need for specialist lifting equipment and creates a stunning look for larger rooflights.

Design

With our edge-to-edge glass technology that stands only 63mm above the upstand, our ultra-modern and sleek style breaks the mould in flat rooflight design. Minimal internal and external sightlines and shatterproof heat soaked toughened glass along with no protruding frames and no water penetrating through fixing points. Fastened from the inside, providing high performance security with no mastic line around the glass, allowing water to glide off the edge.



Simple Installation

Delivered in one piece, with all its fixing straps already attached, our guaranteed no "extra bits" needed, provides quick and easy installation. Fastened from the inside with no external fixings. Internal plasterboard pocket for easy boarding and plastering with a 5 degree pitch recommended.



Thermally Efficient

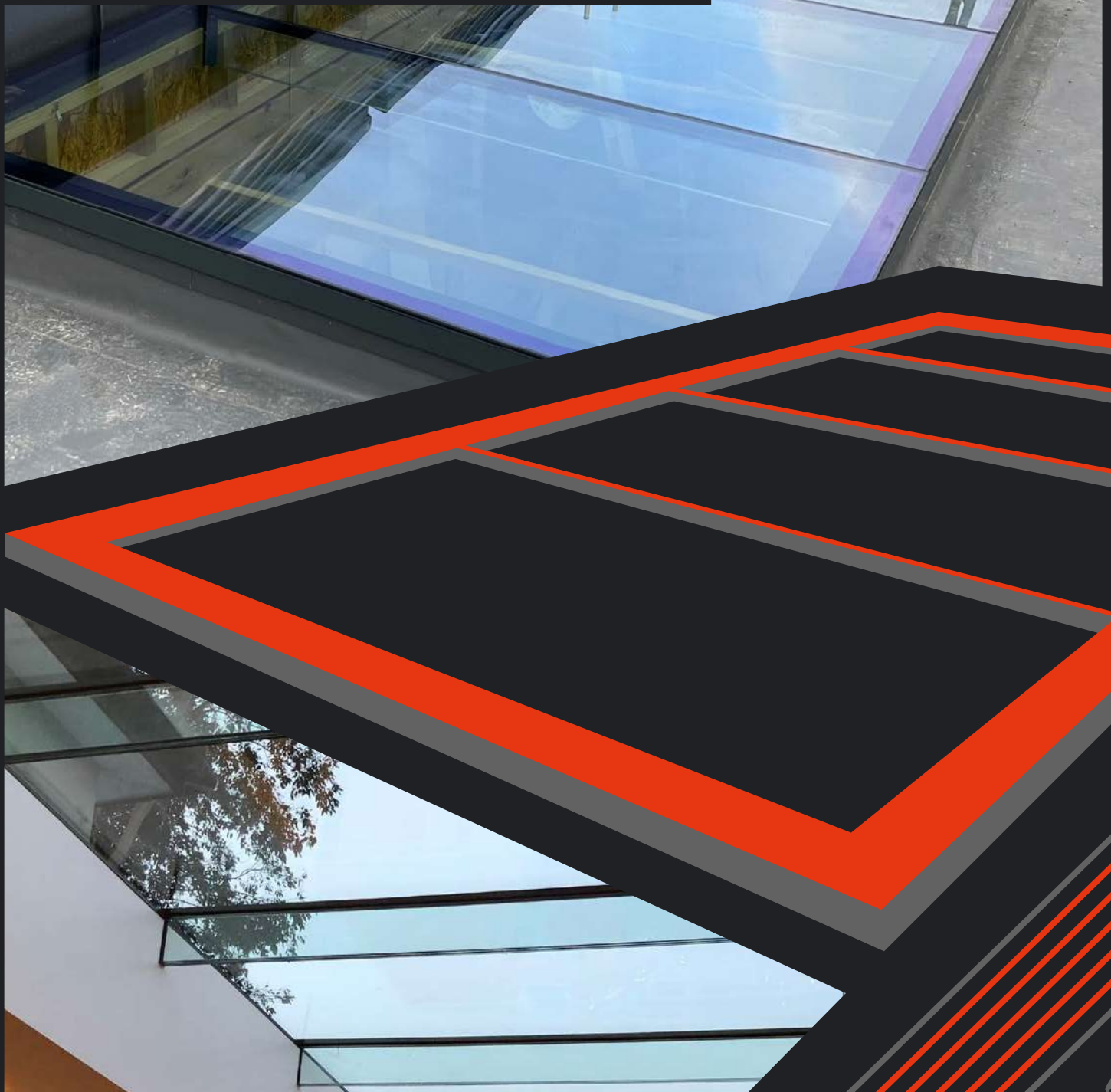
Overall U value (glazing and frame) 1.3 w/m²k. Thermally broken aluminium frame and 6mm solar reflective toughened safety glass externally and 6mm heat soaked toughened safety glass internally as standard. This addition gives you peace of mind as it's very difficult to penetrate from the outside as well as the inner panel is heat soaked toughened glass that provides optimum safety. All of our glass is argon filled complete with warmedge spacer bar providing optimum thermal efficiency.

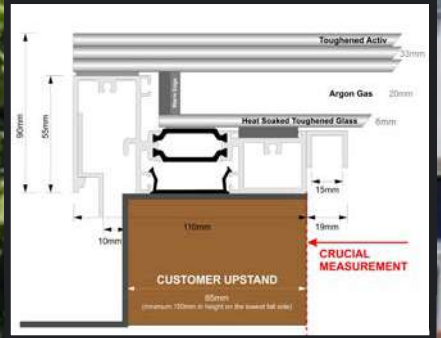


Titan 'EDGE' Multipane

Where larger rooflights are required, over and above the maximum size for a single pane of glass, we supply multipane flat glass rooflights. These provide the same characteristics and sleek, aesthetically-pleasing profile as the Titan Edge roof. Ultra contemporary 33mm laminated toughened glass fins replace the traditional solid rafter used by others providing an interrupted view of the sky.

With simple installation the frame is usually delivered in one section with all fixing straps attached. These multipane flat roofs are the best option for natural light in larger areas.





Titan 'EDGE'

Walkon



Titan 'EDGE' Walkon



With unrivalled, intelligent styling, thermal efficiency, triple safety layered glass, security and simple installation, the Titan 'EDGE' Walkon is both robust and practical.

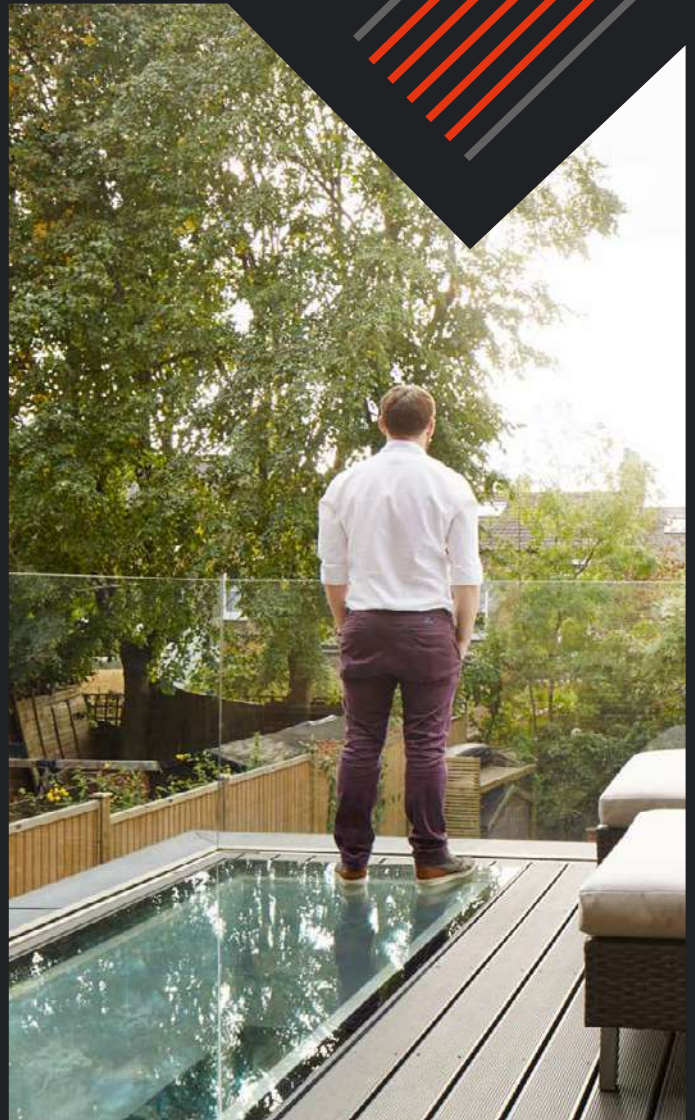
Design

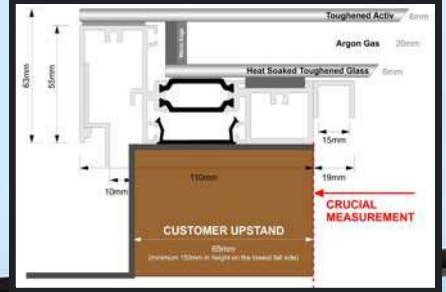
The Walkon roof is available in clear obscure, sandblasted or a textured anti-slip finish providing safety, privacy and durability. Perfectly suited for balconies or areas requiring pedestrian access.

Thermally Efficient

Whilst allowing maximum light to flood in, the Titan 'EDGE' Walkon effortlessly keeps all of the unwanted heat out and the ambient inside room temperature constant, giving you the benefit of year-round comfort and performance.

The Titan 'EDGE' Walkon comprises of 3 layers of 10mm toughened safety glass laminated together combined with an inner pane of 6mm heat soaked toughened low e safety glass providing optimal thermal efficiency. It benefits from both very low maintenance solar reflective glass outside and low emission glass inside providing all-year-round comfort with a typical U-Value of 1.3 w/m²k.





Titan 'EDGE' Multipane





TITAN
ALUMINIUM